

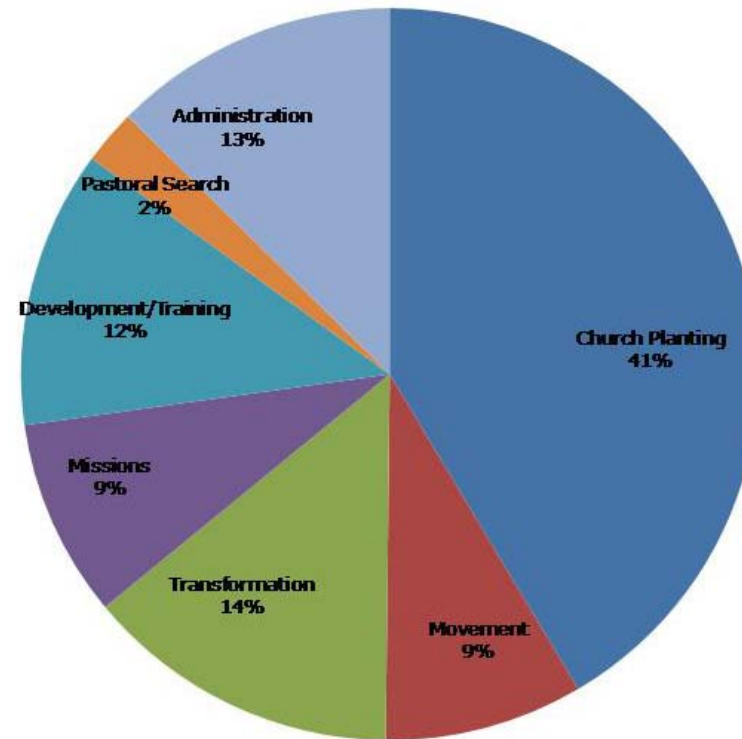
## What people are saying...

## GHC Mission Dollars

**2010 Income: \$ 2,351,089**

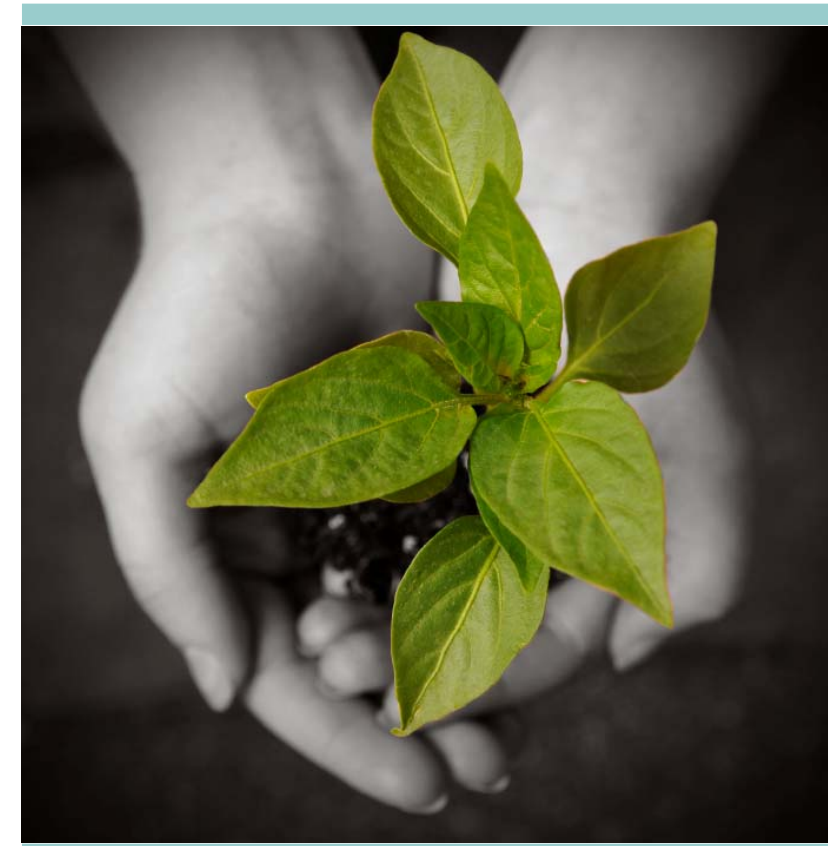
Our income comes from the generosity of churches and individuals.

**2010 Expenses: \$ 2,370,019**



41.46%	Church Planting	\$ 982,652
8.74%	Missions	\$ 207,198
13.86%	Church Transformation	\$ 328,351
12.26%	Development & Training	\$ 290,659
8.71%	Movement-Denominational Change	\$ 206,534
2.40%	Pastoral Search & Recruit	\$ 56,905
12.57%	Administration	\$ 297,810

GHC • 2420 Camino Ramon, Ste#140 • San Ramon, CA • 94583  
Phone/925-277-3980 • Toll Free/888-290-2229 • Fax/925-277-3985  
Teamoffice@aol.com • [www.GrowingHealthyChurches.org](http://www.GrowingHealthyChurches.org)



*Growing Healthy Churches through serving congregations who are committed to and accountable for their role in fulfilling the Great Commission.*

*2011 Mission Brochure*

## Support GHC

### As a Church ...

**Growing Partner** - Increasing giving to the mission work of Growing Healthy Churches by at least 1% of church income

**Tithing Partner** - Giving at least 10% of church income to the mission work of Growing Healthy Churches

**Leading Partner** - Giving at least 15% of church income to the mission work of Growing Healthy Churches

### As an Individual ...

**Friend of GHC** - Giving between \$0 to \$999

**Partner of GHC** - Giving between \$1,000 to \$9,999

**Leading Partner of GHC** - Giving over \$10,000

# Our Mission

Growing healthy churches by networking, resourcing and encouraging churches in the areas of growth, health, transformation and church planting.



Photos Courtesy of: Iglesia Camino, Charlotte NC

# Our Vision

We envision a God-empowered movement of 300 growing and reproducing congregations by 2012.

## GHC Network—Church Planting

Supporting church planters (Acts 13) across the world through ten systems of support:

- Spiritual Vitality
- Funding
- Assessing
- Vision Alignment
- Coaching
- Inviting
- Training
- Caring
- Creativity
- Partnering

## Development & Training

### Leadership

- Mentoring Clusters
- SuperClusters
- GHC Celebrations
- Events Network
- Resource Library

### Financial

- G.O.O.D. Club
- Stewardship Seminars
- Church Treasurer & Business Administrator Seminars
- ...and more

## Church Transformation

We network churches and offer assistance in:

- Vision Casting
- Church Assessments
- Capital Fund Campaigns

## Pastoral Search & Recruitment

GHC is available to consult and resource by:

- Helping find an intentional interim
- Providing assessments, envisioning and search team training.
- Provide names of growth track pastors.

## Administration

- Accounting
- Business Administration/Treasurers
- Ordination/Licensing
- Mission Giving
- Resources

## Global Missions

- We network people with mission trips both here in the area and around the world.
- Train church boards to make sure their mission dollars go exactly where they want them to go.
- Train leaders here at home, across the nation and overseas.
- Support global church planting



Photo Courtesy of: Flipside 13, Fresno CA

## Movement - Denominational Change

We foster peer learning environment for people leading groups of congregations (judicatories and associations) through systemic transformational change .

- Training
- Networking
- Coaching
- Assessments